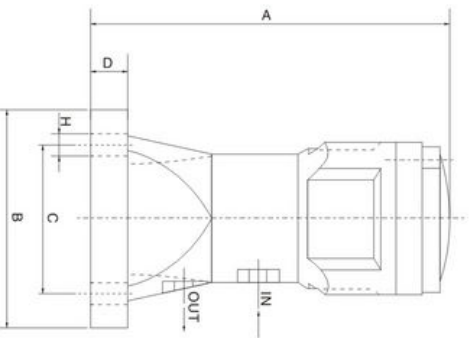




产品概述/Feature

- 产品特点/Product Features:
振动力度可根据气压调整，可马上启动、停止，速度快，低噪音，振动力大，安全。
Vibration intensity can be adjusted based on air pressure, can immediately start, stop, fast, low-noise, vibration force, security.
- 产品应用/Application:
物料输送、振动筛选、料斗振动，帮助包装填充，铸造砂模振动
Feed material conveyor, vibrating screening, vibrating hopper, to help fill packaging, foundry sand mold vibration.

外形尺寸/Dimensions



型号 Type	频率F Requency(V.P.M)			振动力 Vibration power(N)			耗气量 (l/min)	重量Kg	A	B	C	D	H	IN	OUT
	2MPa	4MPa	6MPa	2MPa	4MPa	6MPa									
BVP-30C	1760	2300	2850	195	380	560	230	0.9	128	90	68	18	12	1/4"	1/4"
BVP-40C	1330	1670	1870	270	530	720	250	1.9	160	100	78	18	12	1/4"	1/4"
BVP-60C	1000	1220	1350	400	760	1000	270	4.5	208	140	105	20	16	1/4"	1/4"

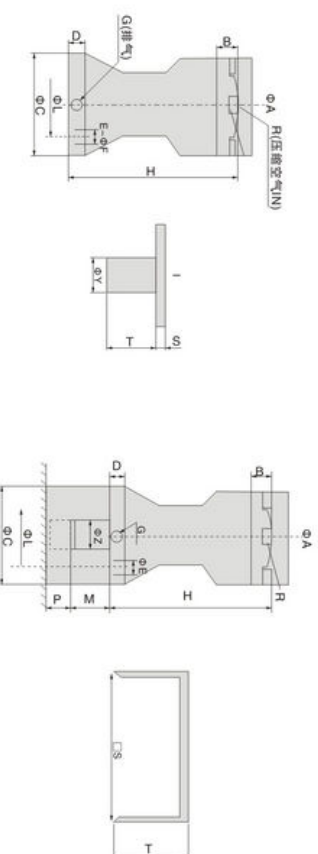
技术参数/Technical parameters



特点/Feature

本产品主要特征有：磁力冲击大、落粉效果好；耗气量少，运动成本低，节能效果好；敲击间隔时间可调整；质量可靠，故障低；结构简单，拆卸方便；外观设计新颖、别致；活瓣耐冲击，（可订制防堵），广泛应用于农药、医药、化工、水泥、染料、颜料、食品、电子、建材、矿产、环保等行业，是粉体加工生产线有力的辅助设备。
The main characteristics are: magnetic impact of large powder falling effect; air consumption, low operating cost; energy-saving effect is good; percussion interval adjustable; quality, reliable, low failure rate; structure is simple, easy removal; innovative designs, chic; piston impact resistance (can be customized explosion proof). Widely used in pesticides, pharmaceuticals, chemicals, cement, dyes, pigments, food, electronics, building materials, mining, environmental protection and other industries, is powerful powder processing line auxiliary equipment.

外形尺寸/Dimensions



技术参数/Technical parameters

型号 Type	A	B	C	D	E	G	H	L	S	T	Y	R
SK-30	75	10	82	13	9	1/8	132	68	6	50	27	1/4
SK-40	90	12	97	18	11	1/4	162	78	10	60	34	1/4
SK-60	121	13	143	19	15	1/4	215	110	10	60	48	1/4
SK-80	160	17	170	20	17	3/8	260	140	14	90	70	3/8
SK-100	200	18	200	23	17	3/8	318	160	18	90	70	3/8

型号 Type	使用压力 Operating pressure (kgf/cm ²)	空气消耗量 Air consumption L/回	冲击力 Wallop kgm/sec	重量 Weight kg
SK-30	3-7	0.028	-0.75	1.1
SK-40	3-7	0.082	-2.2	2.2
SK-60	3-7	0.228	-7.4	5.1
SK-80	4-5	0.455	-16.4	11.1
SK-100	5-7	1.012	-30.0	37.5